



Flight Plan & Site Survey

Created using **RPAS Wilco**®

Operation Name:	Alberta Control line club
Pilot Name:	██████████
Pilot Certificate:	██████████
Flight Start:	April 20, 2023 5:17 PM
Flight End:	April 20, 2023 7:17 PM
Flight Area (Latitude):	53° 43' 6.50" N (53.718)
Flight Area (Longitude):	113° 29' 48.10" W (-113.497)
Altitude - Radius:	Alt: 600 ft - Rad: 185.2 m (0.1 nm)
Airspace:	CONTROLLED
FIR - Contact:	CZEG - 780-890-8397

Please ensure you received all required authorizations prior to flight.

Disclaimer

This Site Survey was created using RPAS Wilco by AIM Robotics. The flight plan contained is intended only for RPAS flights on the date/time and location specified. The user accepts all responsibility for the accuracy and completeness of the information contained.

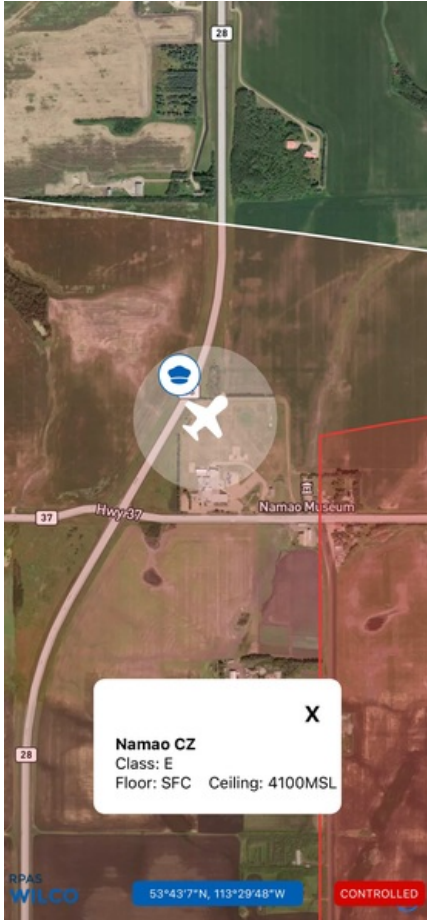
For the complete Terms & Conditions, see

<https://rpswilco.com/#/tnc>



Included

- Site Survey
- Obstacles (if available)
- Nearby Aerodromes
- Canadian Aviation Regulations
- GFA
- Aerodrome Supplements
 - METAR & TAF (if available)
 - NOTAMS
 - CFS

Flight Map



MAP Details

	Latitude	Longitude
 MODEL	53° 43' 6.50" N (53.718)	113° 29' 48.10" W (-113.497)
 Pilot	53° 43' 10.10" N (53.7195)	113° 29' 51.70" W (-113.4977)

Airspace Classification



Overlying Airspaces

Class	Name	Floor	Ceiling
C	Edmonton, AB TCA	7000MSL	9500MSL
C	Edmonton, AB TCA	4600MSL	7000MSL
E	T639 Airway	2200AGL	12500MSL
B	T639 Airway	12500MSL	18000MSL
E	T664 Airway	2200AGL	12500MSL
B	T664 Airway	12500MSL	18000MSL
C	Edmonton, AB TCA	4100MSL	4600MSL
E	Namao CZ	SFC	4100MSL
E	T747 Airway	2200AGL	12500MSL
B	T747 Airway	12500MSL	18000MSL
C	Edmonton, AB TCA	9500MSL	12500MSL
B	Edmonton, AB TCA	12500MSL	18000MSL
E	V112 Airway	2200AGL	12500MSL
B	V112 Airway	12500MSL	18000MSL
E	Edmonton, AB CAE	12500MSL	12500MSL
B	Edmonton, AB CAE	12500MSL	18000MSL

Nearest Aerodromes & Distance from Operation

NAMAQ (CYED HELIPOINT DND)	Lat: 53.669 Long: 113.476	5.667 KM	3.06 NM
MORINVILLE (MIKE'S FIELD) (CMN6 AERODROME Reg)	Lat: 53.837 Long: 113.563	13.881 KM	7.5 NM
STURGEON COMMUNITY HOSPITAL (CSA3 HELIPOINT Cert)	Lat: 53.654 Long: 113.627	11.181 KM	6.04 NM
ST. ALBERT (DELTA HELICOPTERS) (CES3 HELIPOINT Cert)	Lat: 53.686 Long: 113.687	13.037 KM	7.04 NM

Canadian Aviation Regulations

Division III — General Operating and Flight Rules

For full listing please visit <https://laws-lois.justice.gc.ca/eng/regulations/SOR-96-433/FullText.html#s-901.27>

Visual Line-of-sight

- **901.11 (1)** Subject to subsection (2) no pilot shall operate a remotely piloted aircraft system unless the pilot or a visual observer has the aircraft in visual line-of-sight at all times during flight.
- **(2)** A pilot may operate a remotely piloted aircraft system without the pilot or a visual observer having the aircraft in visual line-of-sight if the operation is conducted in accordance with a special flight operations certificate — RPAS issued under section 903.03.

Procedures

- **901.23 (1)** No pilot shall operate a remotely piloted aircraft system unless the following procedures are established:
 - **(a)** normal operating procedures, including pre-flight, take-off, launch, approach, landing and recovery procedures; and
 - **(b)** emergency procedures, including with respect to
 - **(i)** a control station failure,
 - **(ii)** an equipment failure,
 - **(iii)** a failure of the remotely piloted aircraft,
 - **(iv)** a loss of the command and control link,
 - **(v)** a fly-away, and
 - **(vi)** flight termination.
- **(2)** If the manufacturer of the remotely piloted aircraft system provides instructions with respect to the topics referred to in paragraphs (1)(a) and (b), the procedures established under subsection (1) shall reflect those instructions.
- **(3)** No pilot shall conduct the take-off or launch of a remotely piloted aircraft unless the procedures referred to in subsection (1) are reviewed before the flight by, and are immediately available to, each crew member.
- **(4)** No pilot shall operate a remotely piloted aircraft system unless the operation is conducted in accordance with the procedures referred to in subsection (1).

Site Survey

901.27 No pilot shall operate a remotely piloted aircraft system unless, before commencing operations, they determine that the site for take-off, launch, landing or recovery is suitable for the proposed operation by conducting a site survey that takes into account the following factors:

- **(a)** the boundaries of the area of operation;
- **(b)** the type of airspace and the applicable regulatory requirements;
- **(c)** the altitudes and routes to be used on the approach to and departure from the area of operation;
- **(d)** the proximity of manned aircraft operations;
- **(e)** the proximity of aerodromes, airports and heliports;
- **(f)** the location and height of obstacles, including wires, masts, buildings, cell phone towers and wind turbines;
- **(g)** the predominant weather and environmental conditions for the area of operation; and
- **(h)** the horizontal distances from persons not involved in the operation.

Operations at or in the Vicinity of an Aerodrome, Airport or Heliport

- **901.47 (1)** No pilot shall operate a remotely piloted aircraft at or near an aerodrome that is listed in the *Canada Flight Supplement* or the *Water Aerodrome Supplement* in a manner that could interfere with an aircraft operating in the established traffic pattern.
- **(2)** Subject to section 901.73 no pilot shall operate a remotely piloted aircraft at a distance of less than
 - **(a)** three nautical miles from the centre of an airport; and
 - **(b)** one nautical mile from the centre of a heliport.
- **(3)** No pilot shall operate a remotely piloted aircraft at a distance of less than three nautical miles from the centre of an aerodrome operated under the authority of the Minister of National Defence unless the operation is conducted in accordance with a special flight operations certificate — RPAS issued under section 903.03.

Records

- **901.48 (1)** Every owner of a remotely piloted aircraft system shall keep the following records:
 - **(a)** a record containing the names of the pilots and other crew members who are involved in each flight and, in respect of the system, the time of each flight or series of flights and
 - **(b)** a record containing the particulars of any mandatory action and any other maintenance action, modification or repair performed on the system, including
 - **(i)** the names of the persons who performed them,
 - **(ii)** the dates they were undertaken,
 - **(iii)** in the case of a modification, the manufacturer, model and a description of the part or equipment installed to modify the system, and
 - **(iv)** if applicable any instructions provided to complete the work.
- **(2)** Every owner of a remotely piloted aircraft system shall ensure that the records referred to in subsection (1) are made available to the Minister on request and are retained for a period of
 - **(a)** in the case of the records referred to in paragraph (1)(a), 12 months after the day on which they are created; and
 - **(b)** in the case of the records referred to in paragraph (1)(b), 24 months after the day on which they are created.
- **(3)** Every owner of a remotely piloted aircraft system who transfers ownership of the system to another person shall, at the time of transfer, also deliver to that person all of the records referred to in paragraph (1)(b).

ALBERTA

AERODROME/FACILITY DIRECTORY

EDMONTON / NAMAO AB (Heli)

CYED

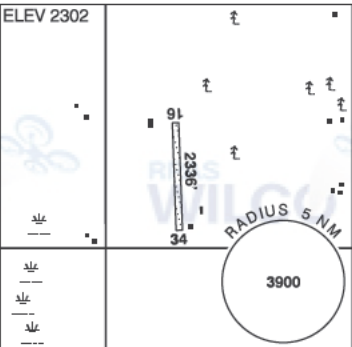
REF	N53 40 09 W113 28 32 8NNE 14°E (2018) UTC-7(6) Elev 2257' VTA A5015 LO1 LO2 T1	
OPR	408 OPS DND 780-973-4163 CSN 319-528-4163 Mil PPR Fit adv DND 780-973-4108 (emerg only) CSN 319-528-4108	
PF	A-1,2 ltd hrs C-3 D-4,5,6	
FLT PLN	Ctc 408 Sqn OPS 780-973-4163 min 48 hr notice for PPR	
FIG	Edmonton 780-890-8386 or Edmonton 866-WXBRIEF (Toll free w/in Canada) or 866-541-4102 (Toll free within Canada & USA)	
ACC	Edmonton IFR 888-358-7526	
MIL	780-973-4163 CSN 319-528-4163 ltd hrs at Sqn OPS	
WX	Met brief for mil only. Lcl Met Section CSN 528-4972 ltd hrs. O/T JMC 1-800-WXMETEO (996-3836) or CSN 432-2613. (See COMM). METAR during mil flt ops. TAF dur mil flt ops, issue times depending on mil requirements.	
SERVICES		
FUEL	F-34	
OIL	NATO 9150-01-209-2684 (156)	
ARFF	CAT 3	
JASU	CE12	
MIL ADV	408 Sqn Ops 131.4 383.7 fm 40.9 ltd hrs	
HELI DATA	FATO 03H(031°)/21H(211°) 148 x 492 ASPH unlt'd	
LIGHTING	ARCAL-118.0 type K	
COMM		
MF/ATF	Namao advsy 118.0 ltd hrs Mon-Fri exc hols O/T ttc 118.0 Opr dates and hrs may vary w/ hout notice Fit Following 383.7	
ARR	Edmonton 119.5	
DEP	Edmonton 119.5	
PMSV	344.6 ltd hrs	
NAV		
NDB	EB 256 (L) N53 40 06 W113 27 37 Unmonitored outside oprg hrs	
PRO	For VFR rtes see Edmonton (Namao) Heli VTPC or as directed by ATC. Heli is within CYR 232. Range 0.6NM E of EB NDB may be open. Avoid CYR 212 asc to 3200 ASL. Air taxi skid-equipped only via shortest rtes or as directed by ATC.	

ALBERTA

AERODROME/FACILITY DIRECTORY

EDMONTON / MORINVILLE (MIKE'S FIELD) AB

CMN6

REF	N53 50 13 W113 33 48 4NE 15°E (2012) UTC-7(6) Elev 2302' VTA A5015	ELEV 2302	
OPR	Michael Poworoznik 780-718-6240 Reg PPR		
FLT PLN			
FIC	Edmonton 866-WXBRIEF (Toll free within Canada) or 866-541-4102 (Toll free within Canada & USA)		
ACC	Edmonton IFR 888-358-7526		
RWY DATA	Rwy 16(163°)/34(343°) 2336x75 GRASS		
RCR	Opr No win maint		
COMM			
ATF	ffc 123.2 2NM 4600 ASL		
PRO	For VFR routes see Edmonton VTPC or as directed by ATC. Edmonton Intl Class C airspace 4600 ASL and above overlies A/D. TRANSPONDER MANDATORY - Acft operating in Edmonton Class C require a discrete transponder code which may be obtained by filing a flt pln or ctc 888-358-7526 at least 30 min prior to entering.		
CAUTION	P-line 75' south thld Rwy 34 runs along road 35 AGL		

EDMONTON / STURGEON COMMUNITY HOSP AB (Heli)

CSA3



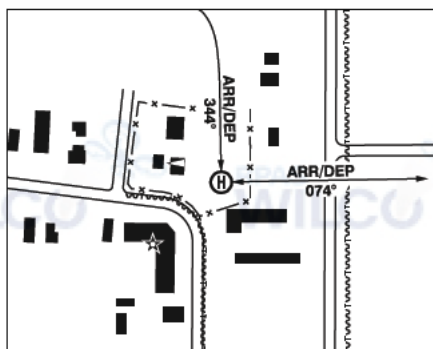
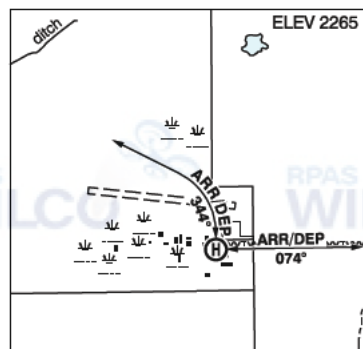
REF	N53 39 16 W113 37 38 Adj NW 15°E (2014) UTC-7(6) Elev 2251' VTA A5015
OPR	Alberta Health Services 780-418-8200 Cert PPR
PF	A-1,2,3,4 C-5,6
FLT PLN	<p>FIG Edmonton 866-WXBRIEF (Toll free within Canada) or 866-541-4102 (Toll free within Canada & USA)</p> <p>ACC Edmonton IFR 888-358-7526</p>
HELI DATA	33' dia concrete 85' dia (4' perimeter fence) Rstd max heli length 57.4'
LIGHTING	RY
COMM	<p>ATF tfc 123.2 2NM below 4100 ASL</p> <p>ARR Edmonton Tml 127.4 3400 ASL and above</p> <p>DEP Edmonton Tml 127.4 3400 ASL and above</p>
PRO	Arr/dep path 135° & 295° fr heli. Certified for twin engine (H2) helicopters. Slope 16% to be used by multi-engine acft only. Routing via heli VTPC or as directed by ATC. Edmonton Intl Class E airspace 3000 ASL (TRANSPONDER MANDATORY) and Class C airspace 3400 ASL and above overlies A/D. Acft operating in Edmonton Class C require a discrete transponder code which may be obtained by filing a fit plan or ctc 888-358-7526 at least 30 min prior to entering. Air traffic advsy freq 123.2 Edmonton City Area in Class G and E airspace.
CAUTION	Trees and streetlights along roadways. Two and three storey bldg S and W of heli.

ALBERTA

AERODROME/FACILITY DIRECTORY

EDMONTON / ST. ALBERT (DELTA HELICOPTERS) AB (Heli)

CES3



REF	N53 41 12 W113 41 14 3.5NW 15°E (2014) UTC-7(6) Elev 2265' VTA A5015
OPR	Delta Helicopters Ltd 780-458-3564 Cert PPR
PF	A-1 C-2,3,4,5,6
FLT PLN	<p>FIG Edmonton 780-890-8386 or Edmonton 866-WXBRIEF (Toll free within Canada) or 866-541-4102 (Toll free within Canada & USA)</p> <p>ACC Edmonton IFR 888-358-7526</p>
HELI DATA	FATO/TLOF 86' dia GRAVEL Safety Area 115' dia Max heli overall length 57'
RCR	Opr Daylight hrs
COMM	
ATF	tfc 123.2 2NM 3400 ASL
PRO	Arr/dep 074° & 344° curved fr heli, slope 8% (H3). Edmonton Intl Class C airspace 4600 ASL and above overlies A/D. TRANSPONDER MANDATORY - Acft operating in Edmonton Class C require a discrete transponder code which may be obtained by filing a flt pln or ctc 888-358-7526 at least 30 min prior to entering.
CAUTION	Power lines 131' SW & 492' E fr heli marked with ball markers.